

LXR α Polyclonal Antibody
Catalog # AP73326**Specification**

LXR α Polyclonal Antibody - Product Information

Application	WB, IHC-P
Primary Accession	Q13133
Reactivity	Human, Mouse, Rat
Host	Rabbit
Clonality	Polyclonal

LXR α Polyclonal Antibody - Additional Information**Gene ID** 10062**Other Names**

NR1H3; LXRA; Oxysterols receptor LXR-alpha; Liver X receptor alpha; Nuclear receptor subfamily 1 group H member 3

Dilution

WB~~Western Blot: 1/500 - 1/2000. IHC-p: 1:100-300 ELISA: 1/20000. Not yet tested in other applications.

IHC-P~~N/A

Format

Liquid in PBS containing 50% glycerol, 0.5% BSA and 0.09% (W/V) sodium azide.

Storage Conditions

-20°C

LXR α Polyclonal Antibody - Protein Information**Name** NR1H3**Synonyms** LXRA**Function**

Nuclear receptor that exhibits a ligand-dependent transcriptional activation activity (PubMed:19481530, PubMed:25661920, PubMed:37478846). Interaction with retinoic acid receptor (RXR) shifts RXR from its role as a silent DNA-binding partner to an active ligand- binding subunit in mediating retinoid responses through target genes defined by LXRES (PubMed:37478846). LXRES are DR4-type response elements characterized by direct repeats of two similar hexanuclotide half-sites spaced by four nucleotides (By similarity). Plays an important role in the regulation of cholesterol homeostasis, regulating cholesterol uptake through MYLIP-dependent ubiquitination of LDLR, VLDLR and LRP8 (PubMed:<a

<http://www.uniprot.org/citations/19481530>). Interplays functionally with RORA for the regulation of genes involved in liver metabolism (By similarity). Induces LPCAT3-dependent phospholipid remodeling in endoplasmic reticulum (ER) membranes of hepatocytes, driving SREBF1 processing and lipogenesis (By similarity). Via LPCAT3, triggers the incorporation of arachidonate into phosphatidylcholines of ER membranes, increasing membrane dynamics and enabling triacylglycerols transfer to nascent very low-density lipoprotein (VLDL) particles. Via LPCAT3 also counteracts lipid-induced ER stress response and inflammation, likely by modulating SRC kinase membrane compartmentalization and limiting the synthesis of lipid inflammatory mediators (By similarity).

Cellular Location

Nucleus {ECO:0000255|PROSITE-ProRule:PRU00407, ECO:0000269|PubMed:25661920}.
Cytoplasm {ECO:0000250|UniProtKB:Q9Z0Y9}

Tissue Location

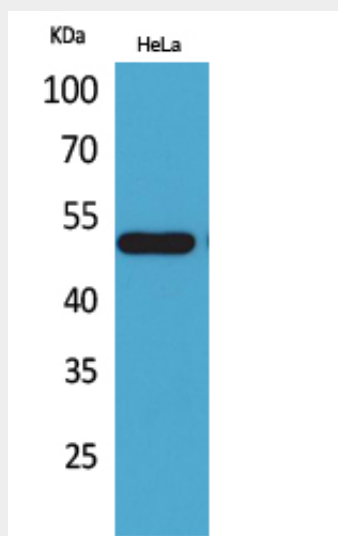
Visceral organs specific expression. Strong expression was found in liver, kidney and intestine followed by spleen and to a lesser extent the adrenals

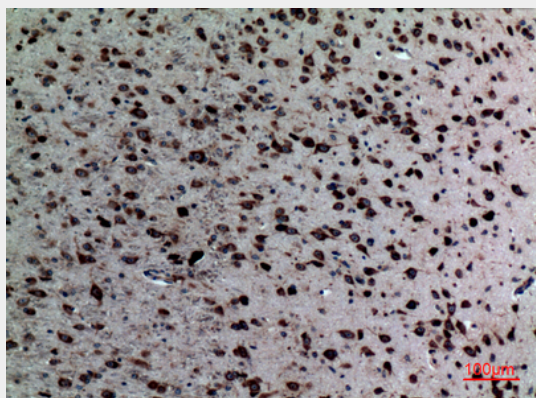
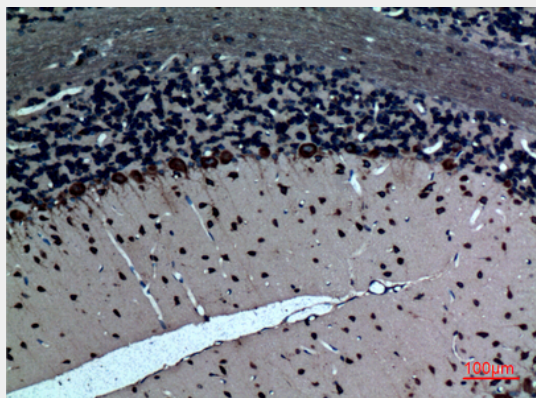
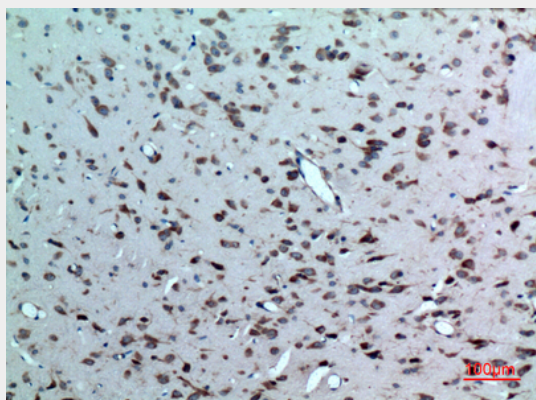
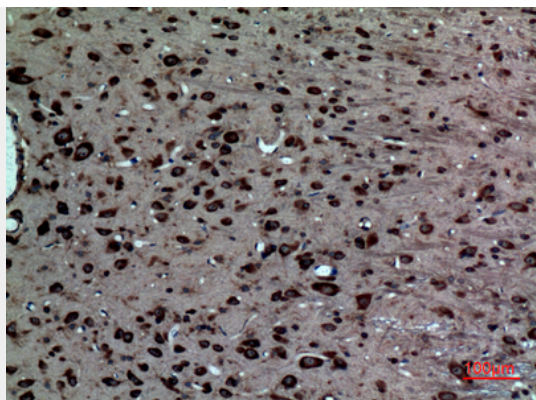
LXR α Polyclonal Antibody - Protocols

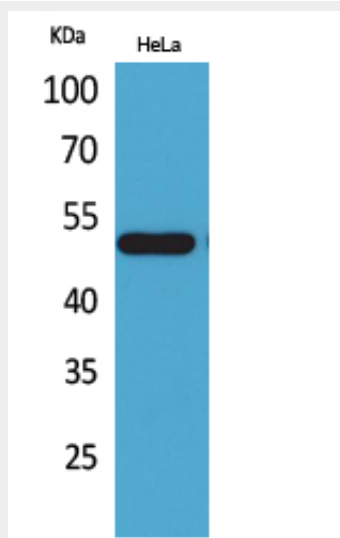
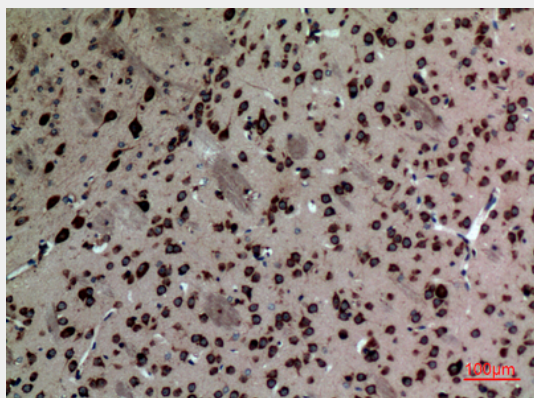
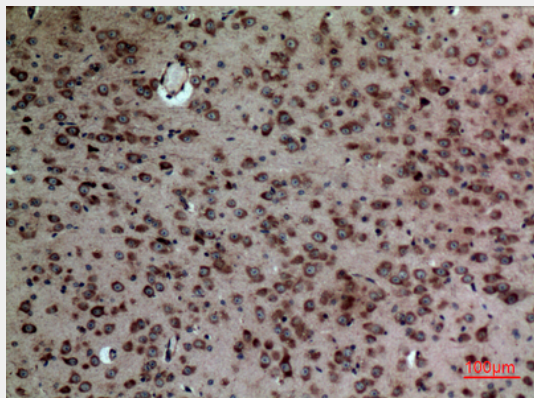
Provided below are standard protocols that you may find useful for product applications.

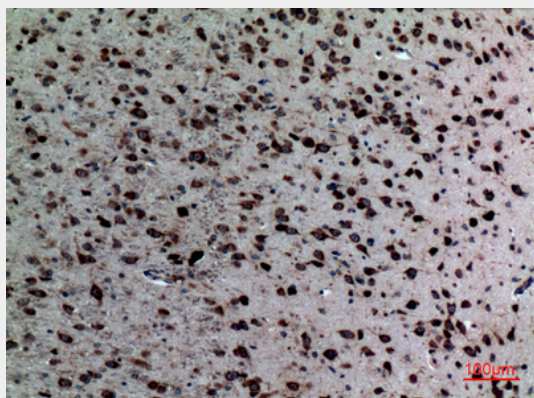
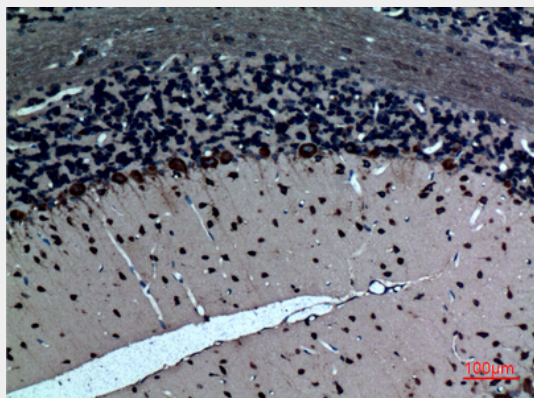
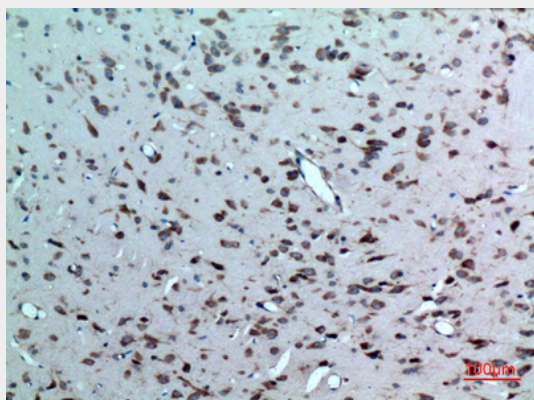
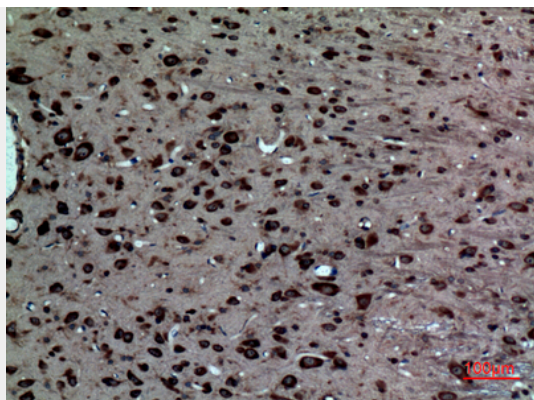
- [Western Blot](#)
- [Blocking Peptides](#)
- [Dot Blot](#)
- [Immunohistochemistry](#)
- [Immunofluorescence](#)
- [Immunoprecipitation](#)
- [Flow Cytometry](#)
- [Cell Culture](#)

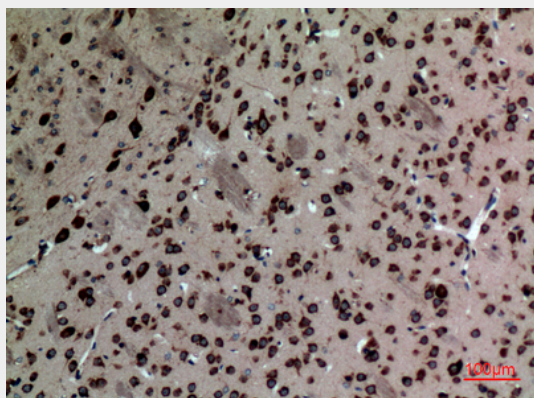
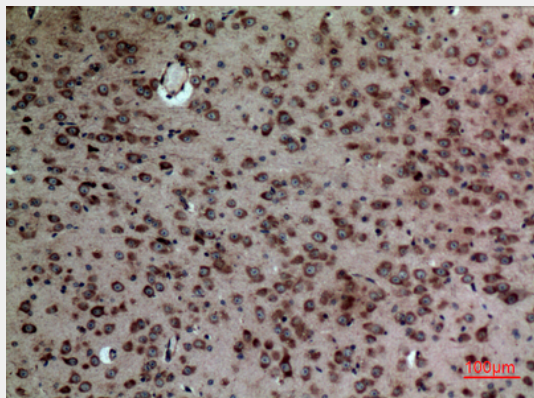
LXR α Polyclonal Antibody - Images











LXR α Polyclonal Antibody - Background

Nuclear receptor that exhibits a ligand-dependent transcriptional activation activity (PubMed:19481530, PubMed:25661920). Interaction with retinoic acid receptor (RXR) shifts RXR from its role as a silent DNA-binding partner to an active ligand-binding subunit in mediating retinoid responses through target genes defined by LXRES (By similarity). LXRES are DR4-type response elements characterized by direct repeats of two similar hexanuclotide half-sites spaced by four nucleotides (By similarity). Plays an important role in the regulation of cholesterol homeostasis, regulating cholesterol uptake through MYLIP-dependent ubiquitination of LDLR, VLDLR and LRP8 (PubMed:19481530). Interplays functionally with RORA for the regulation of genes involved in liver metabolism (By similarity).